

### Constant Current Driver

Model : CCXXWYYA23



Model	Output Current	Input Current	Input Power	Output Power Range	PF	Efficiency	Output Voltage	No load Voltage
CC6W200A23	200mA	≤0.12A	≤11W	4.00-7.20W	≥0.8	≥78%	20-36V	≤50V
CC6W250A23	250mA	≤0.12A	≤11W	4.00-6.00W	≥0.8	≥78%	16-24V	≤35V
CC6W300A23	300mA	≤0.12A	≤11W	3.60-6.30W	≥0.8	≥78%	12-21V	≤33V
CC6W350A23	350mA	≤0.12A	≤11W	4.20-7W	≥0.8	≥78%	12-20V	≤33V
CC6W500A23	500mA	≤0.12A	≤11W	3.00-6.50W	≥0.8	≥78%	6-13V	≤25V
CC6W550A23	550mA	≤0.12A	≤11W	3.30-7.15W	≥0.8	≥78%	6-13V	≤25V
CC6W700A23	700mA	≤0.12A	≤11W	3.50-6.30W	≥0.8	≥78%	5-9V	≤16V

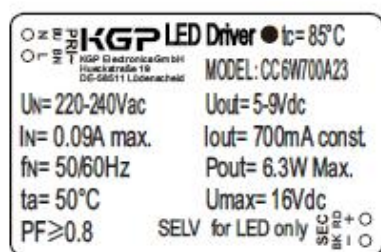
\* Test result @230V, 50Hz, Full Load.

### 1. Parameters

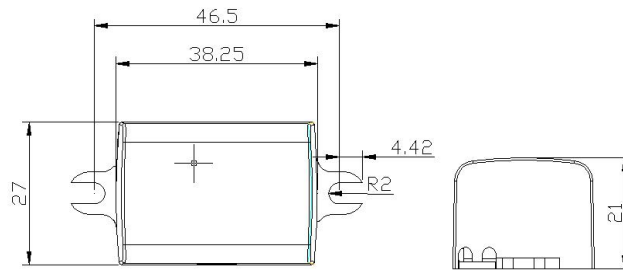
category	Item	Technical Norm
Features	Output Type	Constant Current
	IP Grade	IP20
	Insulation Class	Class II
Input	Rated Input Voltage	220-240VAC
	Range of Input Voltage	180-264VAC or 230-280VDC
	Frequency	50/60Hz
	Input Current	≤0.12A
	Input Power	≤ 11W (230VAC, full load)
	Power Factor	≥0.5 (230VAC, full load)
	THD	≤70%
	No-load Power Consumption	≤0.5W @230VAC
	Inrush Current	≤15A/200us (230VAC, Full-load)
	Connected quantity of 16A Breaker	32pcs/type B ;53pcs/type C @ 230Vac
Output	Current Accuracy	±5%
	Max. Output Power	7W
	Started Delay Time	≤0.5S (230VAC, full load)
	Current Ripple	±7% (Imax-Imin) / (Imax+Imin)
Protection	Short Circuit Protection	Auto Recovery
	Overload Protection	Auto Recovery
	No-load Protection	Auto Recovery
	Insulation voltage	I/P to O/P , 3KVac/1min

	Insulation resistance	>100M ohm @ 500VDC
	Leakage current	I/P to O/P < 250µA
Environment	Ta/Operation Temperature	-25....+50 °C
	Ts/Storage Temperature	-30....+85 °C
	Tc/Enclosure Temperature	85°C
	Humidity	10%....90%RH
	Atmosphere	86-108KPa
Construction	Connection Method	Direct Lead
	Installation	Build-in
	PRI Wire preparation	0.5-0.75 <sup>□</sup>
	SEC Wire preparation	0.3-0.75 <sup>□</sup>
	Dimension	55X27X21mm (L*W*H)
Standards	Certification	CE
	Safety Standards	EN61347-1:2015,EN61347-2-13:2014/A1:2017,EN 62493:2015,AS/NZSIEC61347.2.13:2018,AS/NZS 61347.1:2016 Inc A1
	EMC Standards	EN55015:2013/A1:2015,EN61000-3-2:2014,EN61000-3-3:2013,EN61547:2009
	Performance	EN62384
	Surge	L-N/1KV
Others	RoHS	complied to 2011/65/EU
	Life Time	50,000h @ Ta/ Tc
	Warranty	5years , F.R. < 10000ppm
<b>Remark</b> 1. All Parameters, if not specified, are measured at 230VAC/50Hz and 25°C ambient temperature. 2. LED Driver is a component of the luminaires ,Luminaires and wire layout will affect the EMC, please check the EMC with end products again.		

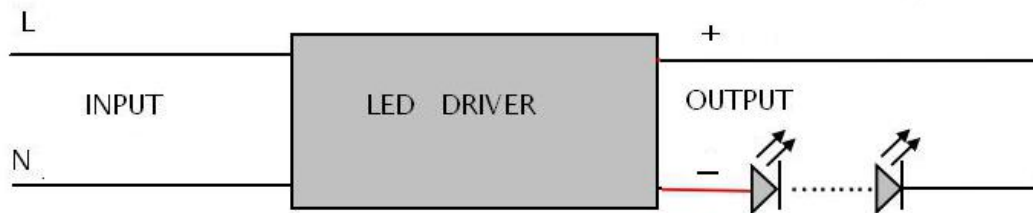
## 2. Label (For example)



### 3. Dimension (Unit: mm)



### 4. Wiring Diagram



### 5. Packing information

packing way	Carton L*W*H(mm)	Pcs/Carton	Net weight/ Pcs(kg)	Net weight/ Carton(kg)	Gross weight / Carton(kg)
With white box and manual	450*240*200	175	0.036	6.3	8.94
Without white box and manual		250	0.037	9.3	9.9

### 6. Wiring instructions

- All connections must be kept as short as possible to ensure good EMI behaviour
- Mains leads should be kept apart from LED Driver and other leads (ideally 5 – 10 cm distance)
- Advice the maximum length of output wires is 3 m
- Secondary switching is not permitted (Except for constant voltage)
- Incorrect wiring can damage LED modules.
- The wiring must be protected against short circuits to earth (sharp edged metals parts, metal cable clips, louver, etc.)