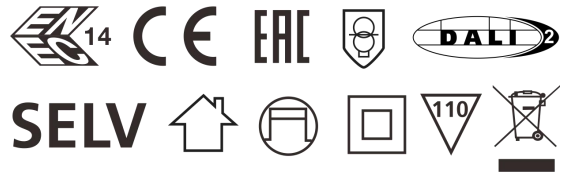




CC35W700-1050CG DALI

Constant Current Dimmable Driver

Model: CC35W700-1050CG DALI



Model	Output Current (230V Full Load)	Input Current (230V Full Load)	Input Power (230V Full Load)	Output Power Range	PF (Full Load)	Efficiency (Full Load)	Output Voltage
CC35W700-1050CG DALI	1050mA	0.2A	65W	35W	0.95	87%	3-40V

1. Parameters

category	Item	Technical Norm
Features	Output Type	Constant Current
	Dimming Type	DALI 2
	Dimming Range	Primary PUSH & DALI dimming: 2%-100%
	IP Grade	IP20
Input	Insulation Class	Class II
	Rated Input Voltage	220-240VAC
	Range of Input Voltage	198-264VAC
	Rang of Input voltage DC	200-300Vdc
	Frequency	50/60Hz
	Input Current	≤0.22A (230VAC, full load)
	Input Power	≤65W (230VAC, full load)
	Power Factor	≥0.95 (230VAC, full load)
	THD	≤13% (230VAC, full load)
	No-load Power	≤1W
	Stand-by Power	≤0.5W(@230Vac when PUSH or DALI turn off)
Inrush Current	<16A (Half current pulse width 100US) @230VAC	
Connected quantity of 16A Breaker	30pcs/type B ;50pcs/type C @ 230Vac	
Output	Ripple requirement (Flickering or lickers-Free)	Flicker value: less than 2% for whole dimming range
	Output Voltage Range	3-40VDC
	No Load Voltage	55VDC Max.
	Output Current	700mA(3-40) 750mA(3-40) 800mA(3-40) 850mA(3-40) 900mA(3-38) 950mA(3-36) 1000mA(9-35) 1050mA(9-33)

	Constant current accuracy	±5%
	Full load output power	35W
	Efficiency	≥87% (230VAC, full load)
	Started Delay Time	≤1S (230VAC, full load)
Control Method	Primary PUSH dimming	Primary PUSH dimming (maximum lead length: 20M)
	DALI Dimming	Yes
Protection	Input over voltage protection	300V AC 50Hz / 60Hz 2h
	Output no-load protection	Yes, self-recovery (with query function)
	Output over-temperature protection	Yes, non-recoverable (with query function)
	Output short circuit protection	Yes, non-recoverable (with query function)
Environment	Ta/Operation Temperature/ humidity	-25+50℃, Humidity:85% (Non-condensing)
	Ts/Storage Temperature	-40℃... + 80℃ 10 ~ 95% RH (non-condensing)
	Tc/Enclosure Temperature	85℃
Construction	Connection Method	Push-in Terminal
	Installation	Independent installation
	PRI Wire preparation	0.75-1.5mm ²
	SEC Wire preparation	0.75-1.5mm ²
	Dimension	With crimping cover:136*42.5*24mm;Fig A Without crimping cover: 96*42.5*24mm;Fig B
Standards	Certification	ENEC CE
	Safety Standards	EN61347-1, EN61347-2-13,EN62493,EN60598-1
	EMC Standards	EN55015 EN61547 EN61000-3-2 EN61000-3-3
	DALI protocol standard	IEC62386-102 IEC62386-207
	Surge	L-N/1KV (L/N)-PE/2KV
Others	RoHS	complied to 2011/65/EU
	Blackout memory function	Yes, PUSH blackout memory
	PUSH Dimming synchronization	15 units Max.
	Packaging requirement	white box+ Instructions Clapboard Outer Carton (K=A)
	Life Time	50000h @Ta/Tc
	Warranty	5years , F.R. < 10000ppm
<p>Remark: 1.All Parameters, if not specified, are measured at 230VAC/50Hz and 25℃ ambient temperature. 2. LED Driver is a component of the luminaires,Luminaires and wire layout will affect the EMC, please check the EMC with end products again.</p>		

2. Label

KGP
KGP Electronics GmbH
Hueckstraße 19
DE-58511 Lüdenscheid

CC35W700-1050CG DALI
DALI Dimmable LED Driver

0.75-1.5
1.8mm

SEC +
I

L •tc Uin:220-240Vac Freq:50/60Hz

N Uo max: 55Vdc Po max.:35W

DA ta: -25 ~ +50°C

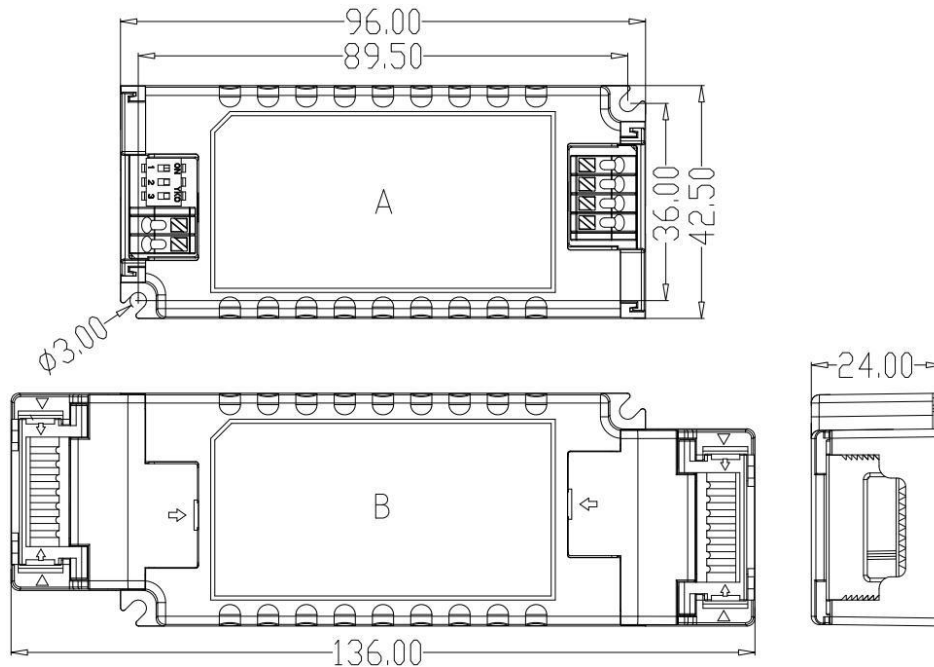
DA PF: ≥0.95

DA tc: 85°C

Uo(Vdc)	mA	1	2	3
3-40	700	—	—	—
3-40	750	ON	—	—
3-40	800	—	ON	—
3-40	850	ON	ON	—
3-38	900	—	—	ON
3-36	950	ON	—	ON
3-35	1000	—	ON	ON
3-33	1050	ON	ON	ON

SELV

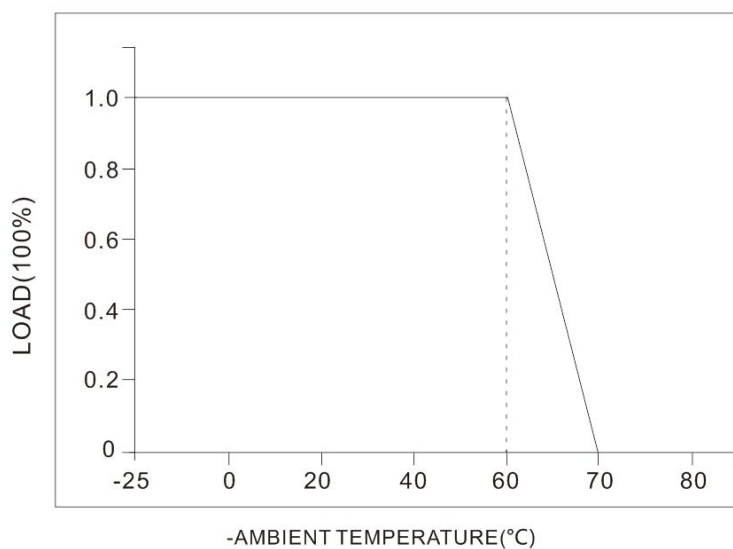
3.Dimension (Unit: mm)



4.Packing information

Carton L*W*H(mm)	Pcs/Carton	Net weight/ Pcs(kg)	Net weight/ Carton(kg)	Gross weight / Carton(kg)
290*25*180	50	0.209	10.45	12

5.Derating



6. Wiring Diagram

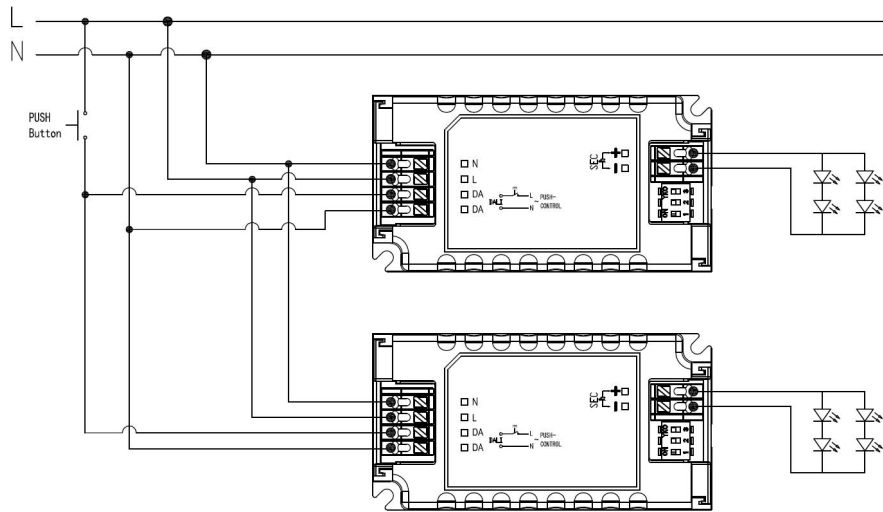


Fig. A: Push Dimming (High voltage)

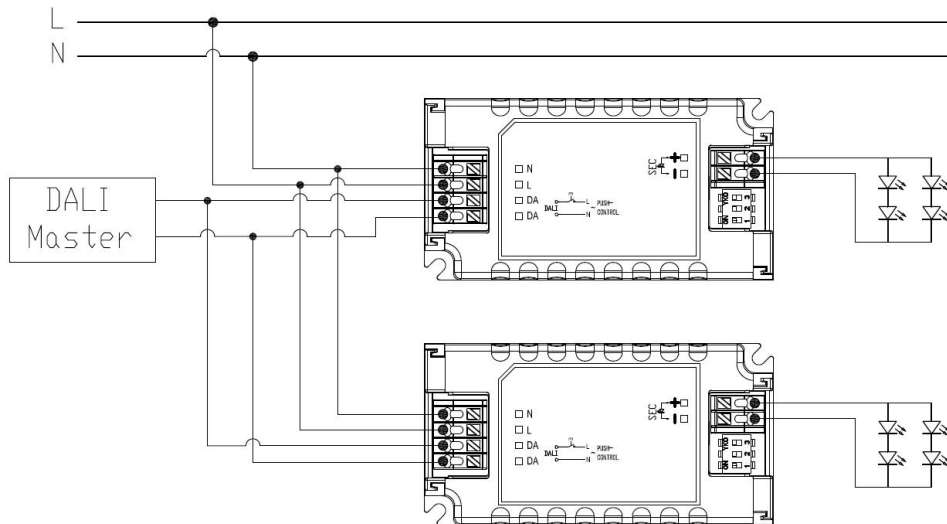
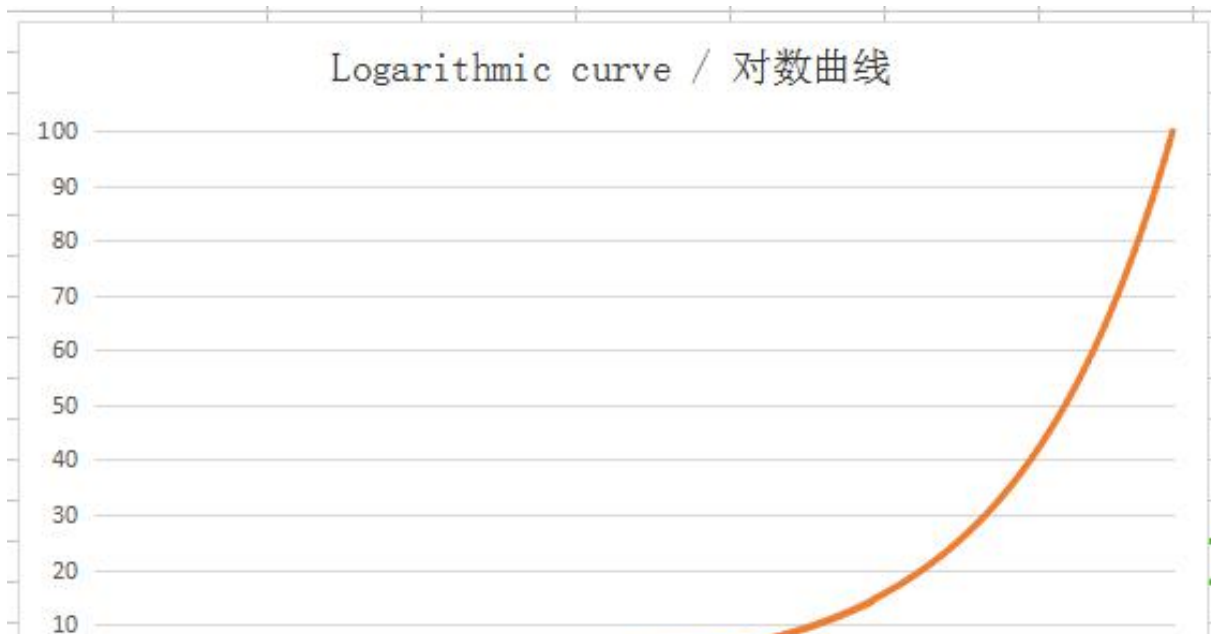
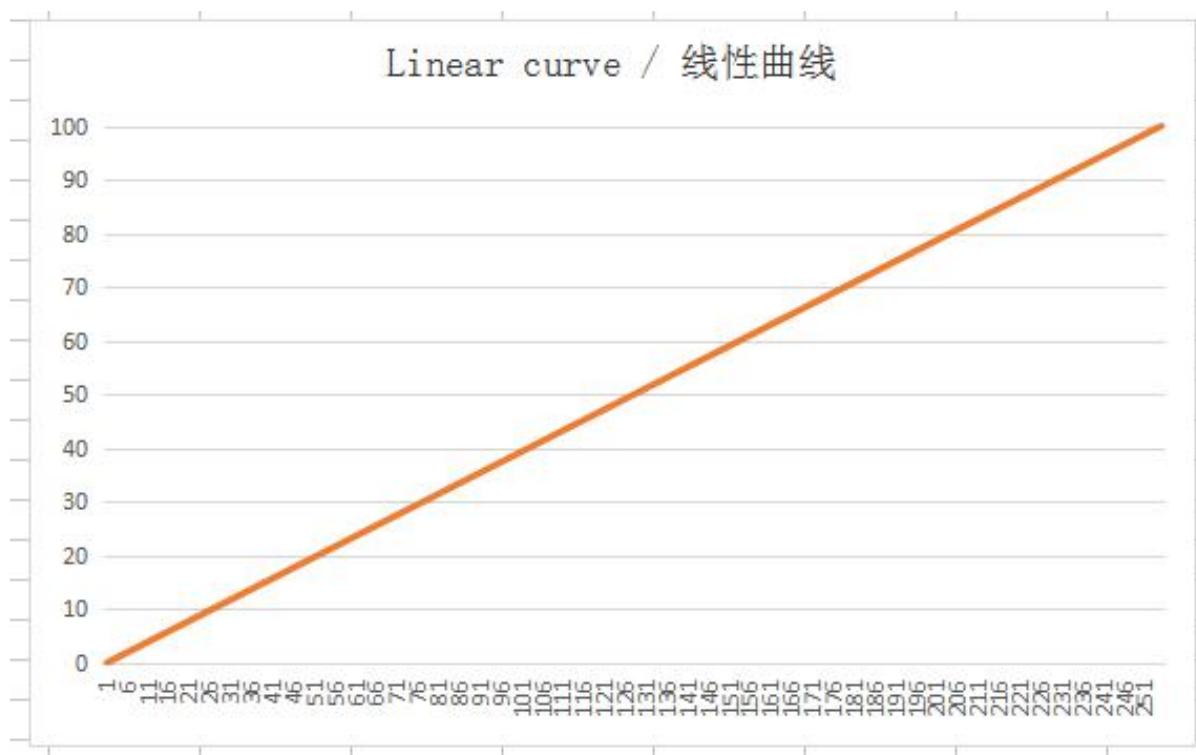


Fig.B: DALI Dimming

7. Dimming curve





8. Current gear setting

Current / voltage gear setting	1	2	3
700mA	-	-	-
750mA	ON	-	-
800mA	-	ON	-
850mA	ON	ON	-



CC35W700-1050CG DALI

900mA	-	-	ON
950mA	ON	-	ON
1000mA	-	ON	ON
1050mA	ON	ON	ON

CC35W700-1050CG DALI